

Fall/Spring Break Camps!

2026-2027

A photograph of three young girls smiling and posing outdoors. The girl in the foreground is wearing a pink top, the middle girl is wearing a light green top, and the girl in the background is wearing a blue top. They are all smiling and looking towards the camera.

 **FLIGHT** 
ATHLETIC ACADEMY

Dates

HAPPY FALL Y'ALL

FALL BREAK CAMP

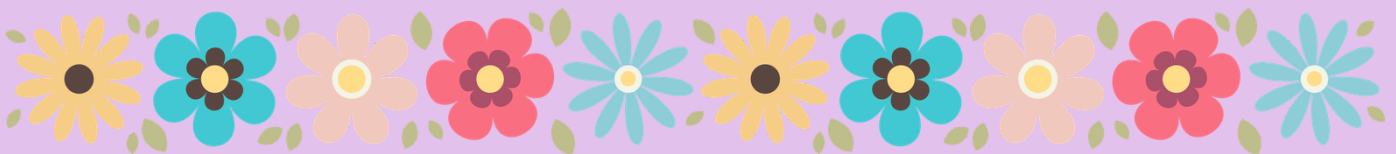
OCTOBER 12TH - 16TH, 2026



SPRING FLING

SPRING BREAK CAMP

MARCH 22ND - 26TH, 2027



Pricing

Daily Rates (9:00AM-3:00PM) Ages 4-11

4 Or Less Days

\$65/Day

Full Week

\$275

Sibling Discounts & Extended Care

Sibling Discount

\$5/Day

Before-Care (7:30AM-9:00AM)

\$50/Week

After-Care (3:00PM-5:00PM)

\$50/Week

HOW TO Reigister

1

Visit The Break Camps Page of Our Website

Your child must be 4-11 and potty-trained to register. Please contact us if your child is not yet 4, but will turn 4 by the first day of their enrollment.



2

Select “Click Here to Enroll”

If you have not already done so, create an account on our Parent Portal and add your child(ren) to your account.



3

Select Your Camp of Choice

Choose the day or days you want your camper to attend. Enrolling in all five days receives a discount!



4

Follow the Parent Portal Instructions

Contact us if you have any questions. Morning and After-Care reservations will be made in this step.



5

Make Your Deposit

Deposits are due at the time of camp registration to reserve your space. The remaining balance is due the Friday before camp.



FREQUENTLY/ASKED Questions

How old does my child need to be?

Your child must be between the ages of 4 and 11.

Can I register the day of?

Yes! As long as we have space and adequate staffing, we welcome same day registrations.

What will my child be doing at camp?

Your child will be grouped by age and skill to learn gymnastics or ninja skills, enjoy themed weekly activities, make daily crafts, and spend time outdoors (weather permitting).

What happens on Fun Fridays?

We'll have a pizza party and the giant inflatable slide will be up for an extra fun dose of gym playtime!

What if my camper gets sick and cannot attend?

Camper's will be given a make-up day as long as a doctor's note is provided. No refunds or credits can be given.

FREQUENTLY/ASKED Questions CONTINUED

Can I change the dates I'm registered for?

You can change/cancel dates your child is registered for for up to a week before camp without any fee (space permitting). It is \$5 to change within a week.

Is there Before-Care?

Yes. Before-Care drop off is at 7:30AM and is \$50/week. Children will do puzzles, watch morning cartoons and relax before they day begins.

Is there After-Care?

Yes. After-Care pick up is at 5:00PM and is \$50/week. Children will play board games, watch a movie, color and relax to unwind from the day.

Can I wait to add Before or After-Care?

NO! You MUST add morning or after care in advance so that we can staff properly. There will be no staff members here if no one is signed up for morning care in advance.

Are there any discounts?

Yes. We offer sibling discounts and buy more, save more discounts for campers who enroll for full weeks.

FREQUENTLY/ASKED Questions CONTINUED

What should my child wear?

Comfortable, non-restrictive clothing with no zipper, buttons or strings. A modest one-piece bathing suit or swim trunks and swim shirt should be packed every day.

What will children do outside?

Children are welcome to play four-square, draw with sidewalk chalk, jump rope, play hop-scotch, blow bubbles or sit outside and enjoy the sunshine.

Can I bring my child to camp sick or ill?

NO! If your child becomes ill at camp, the director on duty will assess their symptoms and use discretion in caring for their needs. Please be sure you have an up-to-date emergency contact listed on your waiver and in the Parent Portal.

What happens if my child misbehaves?

Guardians will be informed of any minor disciplinary incidents at pick-up. If a significant situation arises, you may be asked to pick your camper up for early dismissal.

Packing List

- LUNCH (EXCEPT FRIDAY. WE WILL SERVE PIZZA ON FRIDAY)
- SUNSCREEN
- CHANGE OF CLOTHES (JUST IN CASE)
- WATER BOTTLE
- SNACKS
- INHALERS OR EPIPENS (LABELED AND LEFT IN OFFICE)

**LABEL
ALL
ITEMS**



MEDICATIONS & Allergies

Medications

For the safety of all campers and staff, any EpiPens or medications must be clearly labeled with your camper's name and will be stored securely in our office.

Please stop by the office on or before your child's first day of camp to provide the necessary information. We also recommend reminding the Camp Director of any medications before 9:00 AM each day.

Scheduled medications will only be administered during lunch unless prior arrangements have been made with the Camp Director.

Allergies

Please inform the check-in staff EVERY DAY of any allergies your camper has and ensure that an allergy band is placed around his/her wrist. Please help communicate to your child that it is important for them to keep their allergy band on throughout the day. If it falls off, encourage them to immediately find an adult to give them a replacement. Our team will check allergy bands to help campers avoid contact with their allergens.

If your child needs to eat snack and lunch in a separate area, please let us know. We would be happy to show you where they will eat.

Please note: Flight Athletic Academy is not a peanut-free facility.